

# **Cleaning recommendations**

## Content

### Preventative measures

P. 4

### Routine cleaning

P. 7

### Spot cleaning

P. 8

### Specialised maintenance

P. 11

### Specialised maintenance Mini-tuft

P. 13

### Recommended and approved machinery & products

P. 14

### Warranty

P. 18

# Cleaning recommendations

NEED A HAND?

arc edition prides itself in making quality wall-to-wall carpet that meets the strictest European standards, EN1307. Our carpets are known for their strong character and their optimal retention of colour and appearance. These properties not only guarantee a long life, but also make the cleaning of the arc edition flooring easier and faster, which in turns means lower maintenance costs.

To help you enjoy your arc edition carpet as long as possible, we have compiled the following **Cleaning recommendations**. Retaining the beauty of your carpet requires a scheduled approach. The good news? Smart and regular maintenance repays itself many times over.

 arc **edition**

# Preventative measures

## Prepare & prevent

The lasting and beautiful character of an arc edition floor is determined by the right choice of the quality and colour of the carpet. In rooms with intensive foot traffic, it is best to opt for darker colours. The carpet has a greater dirt-concealing capacity in such a case.

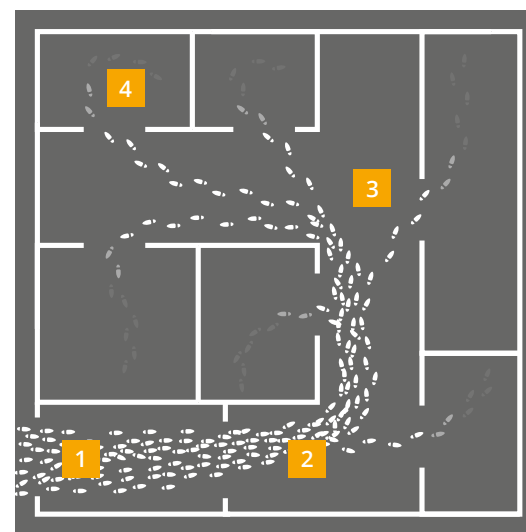
## Clean-off zone

The protection of an interior starts with an optimal protection of the entrance. **85% of the dirt is brought in by shoes**, and that is why we recommend installing an efficient and sufficiently long clean-off zone (minimum 9 metres) where an entrance from the outside or from heavily soiled areas is possible.

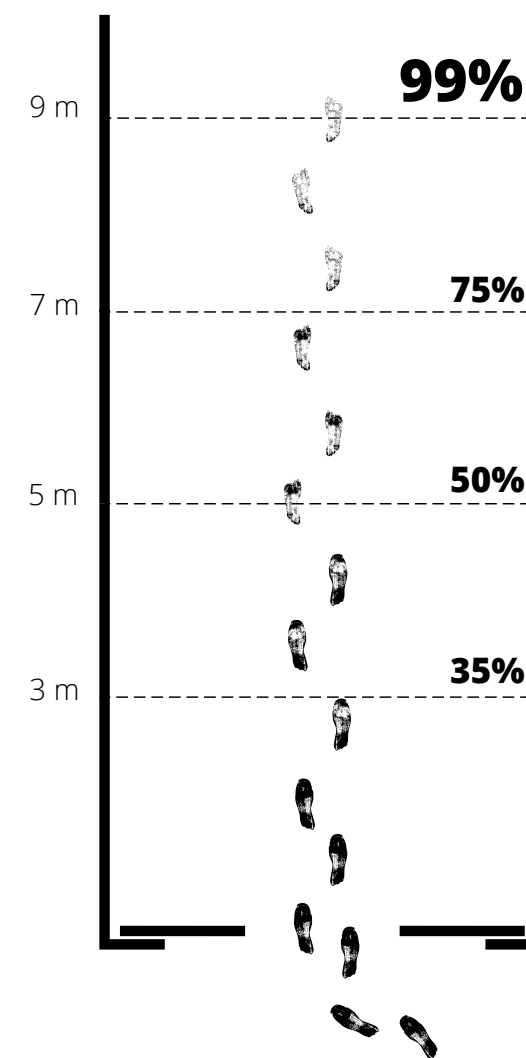
We recommend you to opt for an arc edition flooring with a darker colour and an irregular pattern. Carpet, made of sturdy, soil-resistant yarn, is ideally suited for clean-off zones.

## Types of traffic areas

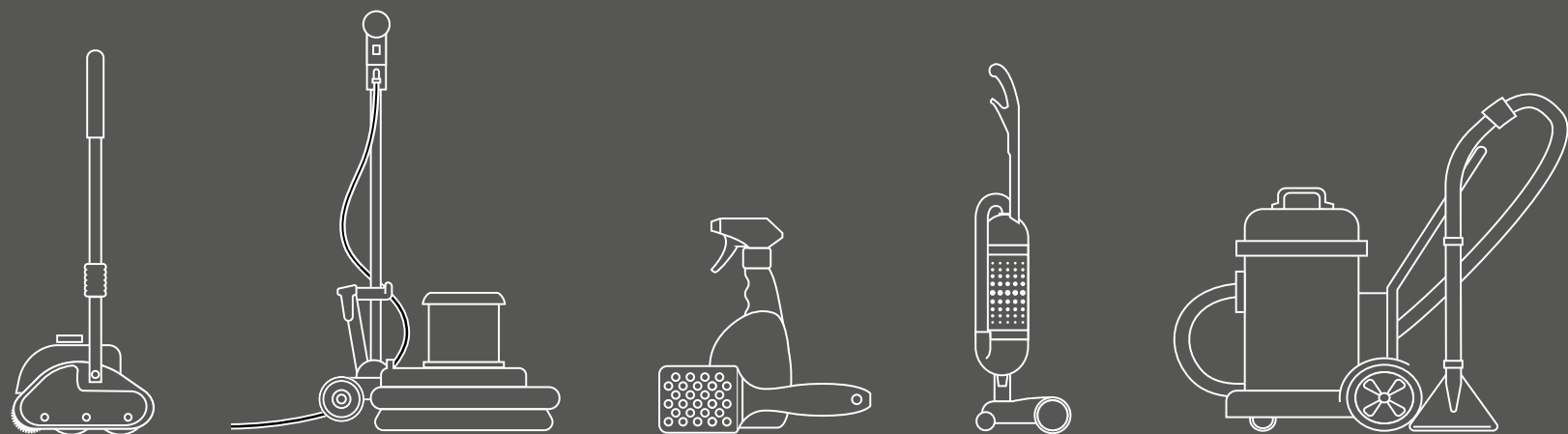
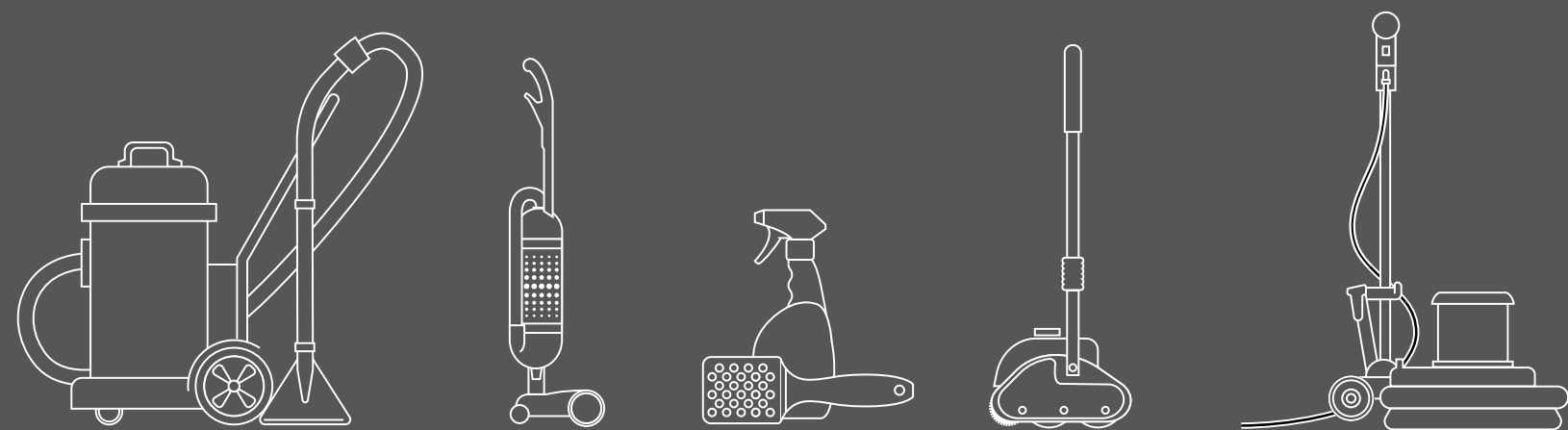
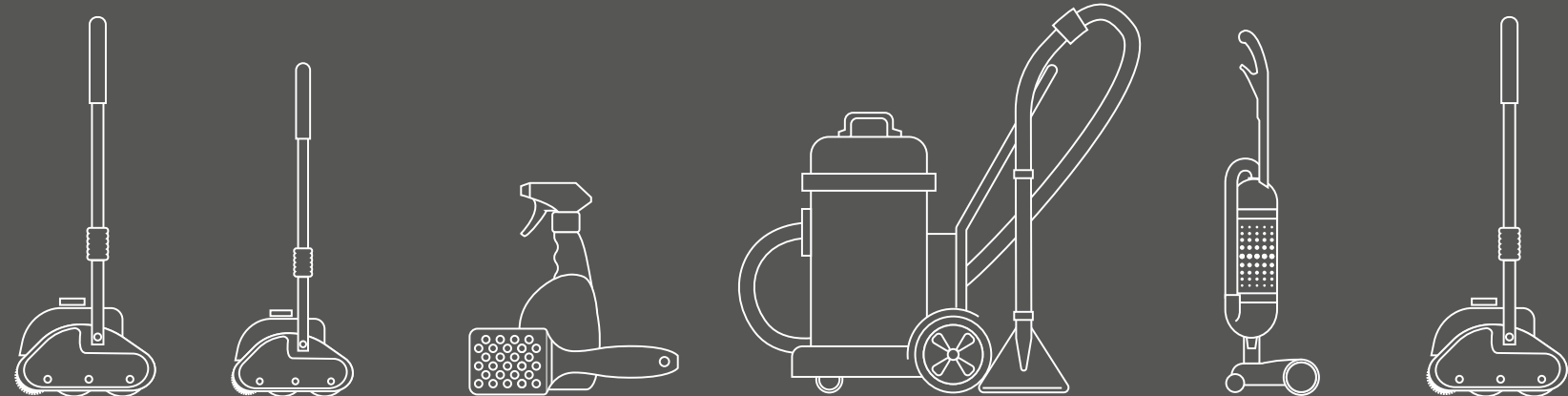
An (office) space can be divided in **4 traffic areas**:



- 1 Clean-off zone
- 2 Heavily intensive traffic area
- 3 Intensive traffic area
- 4 Normal traffic area



WE RECOMMEND  
INSTALLING A CLEAN-OFF  
ZONE OF MIN. 9 METRES.



# Routine cleaning

A CLEAN PLACE  
MAKES  
A HAPPY SPACE.

## Daily maintenance

Vacuum cleaning using a brush vacuum cleaner constitutes the basis of daily maintenance. It can remove about 80% of the dirt from the carpet. Furthermore, a brush vacuum cleaner helps to retain the appearance of a carpet's pile. Do not forget to regularly replace the vacuum cleaner bag.

The vacuuming frequency is determined by the foot traffic and the soiling of the carpet:

- **Heavily intensive traffic:** 1 x per day
- **Intensive traffic:** 2 to 3 x per week
- **Normal traffic:** 1 x per week

Recommended machinery: see page 14.

CAUTION: using horizontal rotating brushes to clean the carpet might affect the appearance of the pile of the arc edition flooring.

# Spot cleaning

## Spot removal

We recommend that marks be removed from the carpet immediately, as old spots are far more difficult to clean.

Take the following tips into account:

- remove solids using a spoon or spatula;
- remove liquids using a clean white cloth or blotting paper;
- always treat the mark using a clean damp cloth;
- work from the edges towards the middle of the mark, with the pile;
- dab the mark, but never rub it.

When removing marks, carefully follow the instructions mentioned on the cleaning products. Always use products that are pH neutral and avoid products with chlorine (e.g. bleach) or chemically aggressive oxidants. We recommend pre-testing an inconspicuous area for colour fastness and material durability.

## Removing water-based marks

Sprinkle the agent directly on the carpet. Do not use the agent if the carpet leaves a coloured mark on the cloth. Subsequently, use the dry cleaning agent as follows:

- 1 After removing a semi-hardened or hardened mark, dab at the mark with a clean damp cloth. Then remove the remaining soiling with a small quantity of a dry cleaning agent. Sprinkle the cleaner over the mark and brush it in carefully with a hand brush.
- 2 Let the area dry for around 15 to 30 minutes and brush the cleaner in again. If the cleaner appears to be sticking to the carpet, brush carefully and vacuum the affected area. If necessary, repeat the process.

## Removing oil-based marks

To remove oil-based marks such as paint, fat, tar, asphalt, etc., use specialist carpet stain removers. Sprinkle the remover on a clean, white cloth and press it onto the carpet. Do not use the remover if the carpet leaves a coloured mark on the cloth. Subsequently use the stain remover as follows:

- 1 Wipe carefully inwards from the outside edge of the mark. Repeat the procedure until the mark has been removed. Following chemical treatment, rinse the mark with a damp cloth to remove cleaner residue. Protect the cleaned part until the carpet is completely dry.
- 2 Afterwards treat with a dry cleaner as described under 'removing water-based marks'.

## Removing dried-on and stubborn marks

Marks that are hard to remove like rust, varnish, coffee, chewing gum and soft drinks require specialist treatment (see spot removal chart).

In case the stubborn mark cannot be removed, call in an expert who can use the right products to avoid damaging the carpet. Recommended products: see page 14.

STAIN	TREATMENT
Coffee, thee, soft drinks and wine Blood, urine and vomit	Moisten a towel with cold water and let it absorb the fluid. Repeat until all fluid has been absorbed. Let the carpet dry and spray the stain with the Crystal Spot Remover®. Brush away with the Spotting Tool®.
Food and fruit	Remove all loose elements with a tea spoon. Spray the stain with the Crystal Spot Remover® and brush away with the Spotting Tool®.
Chewing gum	Spray the stain with a gum freezer. Scrape off the chewing gum with a tea spoon. Follow up with a little Oil & Grease® on a dry cloth.
Shoe polish	Apply a little Oil & Grease to a dry cloth and dab the stain away. Then spray the stain with the Crystal Spot Remover® and brush away with the Spotting Tool®.
Stickers, paint, sealant and glue	(Remove the sticker). Let the (remaining) stain dry and scrape it off with a tea spoon. Apply a little Oil & Grease® to a dry cloth and dab the stain away. Spray the stain with the Crystal Spot Remover® and brush away with the Spotting Tool®.

These spot removal tips apply to all arc edition carpet styles: loop pile, cut pile and Mini-tuft. arc edition cannot guarantee that the recommended products will remove all stains.

# CRYSTAL DRY METHOD

## Specialised maintenance

PROLONG YOUR CARPET'S  
LIFE-CYCLE THROUGH  
SPECIALIST CLEANING.

The goal of specialised maintenance is to keep the carpet clean and maintain a consistent appearance level. The primary focus is on frequent low-moisture pile lifting and the removal of sticky residues or stubborn marks that would otherwise trap soil in the carpet fibers.

We recommend to execute the specialised maintenance 2 to 3 times per year depending on the foot traffic and the soiling of the carpet.

### Encapsulation method

The encapsulation method is the next-generation approach to effective periodic maintenance and can be performed by means of the **Smart Care® TRIO System** machine.

Before starting, examine the carpet for accidental spots. They should be removed with the Crystal Spot Remover® & Spotting Tool®.

The **Crystal Dry Method** deposits cleaning product in solution onto the surface as mist (low moisture). Crystals, made up of polymers, are sprayed over the carpet. The Triomachine then brushes the carpet so

that the dirt and dust are encapsulated into the crystals. The result? A crystalline residue that encapsulates foreign soils. The soil-laden crystals are removed easily by vacuuming.

Advantages:

- highly effective;
- dry process: no sticky residue will remain in the carpet;
- the carpet can be used immediately after cleaning;
- less to no noise pollution
- prescribed and advised by all recognised carpet manufacturers;
- Green seal certified;
- no odours.

Committed to reducing our environmental impact, arc edition recommends this water-saving, sustainable solution for carpet cleaning. Recommended machinery: see page 14.

CAUTION: the Bonnet cleaning method might affect the appearance of the pile of the carpet. arc edition only recommends this method for minituft® carpet (see page 13).



## Hot water extraction method

The hot water extraction method, an **alternative** deep cleaning method, removes soil deep in the pile. First, a solution of water and detergent, based on crystals, is sprayed on the carpet. Then, the carpet is rinsed thoroughly using the pressurised hot water extraction method.

Keep in mind:

- a higher volume of water is used;
- cleaning will have to be scheduled in the evening or at night, due to longer drying times and possible noise nuisance;
- there is a chance of odour development;
- there is a risk of shrinkage;
- caution should be taken with under-floor wiring.

We recommend not to walk on the carpet or put furniture back in place until the carpet is completely dry, to avoid the risk of dirt on chair legs etc. rubbing off on the damp carpet.

We advise against using shampoo detergent. High pH cleaners leave a residue, which may cause rapid resoiling and fiber damage. Recommended machinery: see page 14.



CAUTION: the hot water extraction method should not be used on the arc edition minituft® carpet. These products require low moisture or dry cleaning only: see page 13.

## Specialised cleaning methods for minituft® carpet

### arc edition minituft® carpet collections:

- e-weave
- Blaze W2W

**Light soiled areas:** we recommend to use the **Bonnet cleaning method** in case of light soiling.

First apply Crystal Dry Extra® onto the surface. Next agitate the surface utilising a Bonnet machine to which a 100% cotton bonnet has been attached. After the area has dried completely, the carpet should be vacuum cleaned.

In case an additional treatment would be needed, use the Bonnet cleaning method and moisturise the carpet with Crystal Dry Extra®.

**Heavy soiled areas:** we recommend to use the **Encapsulation method** in case of heavy soiling (more on page 15).

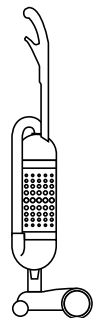
Before starting, remove marks by means of the Crystal Spot Remover® and Spotting Tool®.

Then apply the Encapsulation method by means of the Smart Care® Trio System machine. Next examine the carpet. In case an additional treatment would be needed, use the Bonnet cleaning method and moisturise the carpet with Crystal Dry Extra®.

# Recommended and approved machinery & products <sup>(1) (2)</sup>

## ROUTINE CLEANING

- **Basic vacuum cleaner** (for everyday use)
  - Specialised vacuum cleaner:  
brush vacuum cleaner type **SEBO Dart 2**
- Sebo Dart 2 offers professional performance in a lightweight, versatile and easy to manoeuvre machine. Designed to be agile and user-friendly, SEBO Dart 2 achieves superb cleaning results.

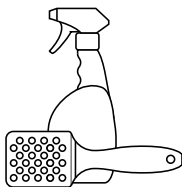


### SEBO DART 2

Vacuum motor 1300  
Brush motor: 200 Watt  
Air flow: 50 l/s  
Working width: 370 mm  
Brush speed: 2700 rpm  
Weight: 7.4 kg  
Cable length: 9.5 m  
Filter S-class  
Filter bag: 3.5 L  
3 layers

## SPOT CLEANING

- **Spot removal**
- The Crystal Spot Remover® is a stain-removal agent based on crystals. Combined with the Spotting Tool®, Crystal Spot Remover® is the perfect product for easy and safe removal of stains for commercial carpet. Using chamfered openings instead of bristles, the Spotting Tool® lifts stains by mildly agitating the fibers.

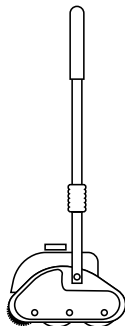


### CRYSTAL SPOT REMOVER®

Stain-removal agent based on crystals  
Used in combination with the Spotting Tool®

## SPECIALISED MAINTENANCE

- **Encapsulation method**
- The Smart CARE® Trio machine is a low-moisture agitation and crystallization carpet maintenance system.
- Periodic maintenance:** Smart CARE® Trio machine + Crystal Dry Extra®
- Deep cleaning:** Smart CARE® Trio machine + Crystal Quick Restore (replaces the hot water extraction method)



### SMART CARE® TRIO MACHINE

**UNIT 15 inch / 20 inch**  
Power: 1100 Watt / 1400 Watt  
Cleaning capacity: 200 m²/h  
Deep cleaning capacity: 100 m²/h  
Cleaning width: 381 mm / 508 mm  
Brush speed: 480 rpm / 665 rpm  
Dry weight: 30 kg / 34 kg  
Voltage: 230 V  
Frequency: 60 Hz  
Fresh water tank capacity: 9.5 L



Smart CARE® Trio machine

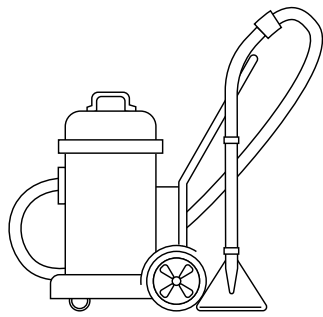
(1) Our list of recommended machinery is just that: a recommendation. Naturally, equivalent models may be used.  
(2) All machinery and products are tested & approved by The Carpet and Rug Institute (CRI).



→ Hot water extraction method

The hot water extraction method is an effective deep cleaning method that removes soil deep in the pile. The machine sprays cleaning solution onto the carpet using high pressure and simultaneously vacuums the dirty solution.

This cleaning method **CANNOT** be used on the arc edition minituft® carpet.



**HOT WATER EXTRACTION MACHINE**

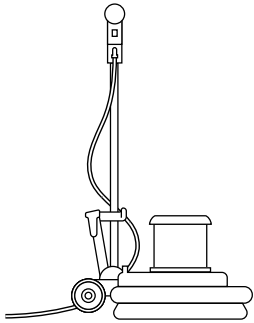
**CTD-570-2 Spray Extraction Machine\***  
Power: two 1200 Watt by-pass powerflo motors  
Voltage: 230 V  
Capacity: 10 L  
Built-in pump  
With full tool kit

(\*) Technical specifications may vary by brand and model.

→ Bonnet cleaning method  
(for minituft® carpet only)

The Bonnet cleaning method, a low-moisture cleaning system, is a rotary floor machine with a cotton cleaning pad. As it moves over the carpet, the agitation causes dirt to be absorbed into the cotton cleaning pad.

This cleaning method can **only** be used on the arc edition minituft® carpet.



**BONNET CLEANING MACHINE**

Power: 1200 Watt/1500 Watt  
Voltage: 230-240 V  
Frequency: 60Hz  
Capacity: 0 L  
Weight: 22-30 kg

RECOMMENDED CLEANING COMPANY

For additional advice on cleaning methods, products or local Progenta partners, please contact your local arc edition sales representative or:

Progenta Projects services (headquarters)  
Veenendaalsestraatweg 14b  
3921 EC Elst (Utr)  
The Netherlands  
Tel. 0031 (0) 318 – 471 823  
info@progenta.com

## WARRANTY

For optimal results, a regular cleaning of the arc edition flooring is required. The carpet must be cleaned and maintained in accordance with the arc edition cleaning recommendations. If it is ascertained that the carpet is not cleaned in an appropriate way, arc edition cannot be held liable for errors resulting from unprofessional cleaning.

Moreover, this will result in the loss of the company's **warranty** coverage.

